



LIVINGWELL HOMESPECIAL

Warming Up White

A West Palm Beach condo goes from sterile to stunning

THE SISTER WHO OWNS THIS WEST PALM BEACH CONDO WAS TIRED OF LIVING in a plain white box. White floor, walls and ceilings gave the place a cookie-cutter appearance that didn't express her love of color, pattern and texture. But by the time we were done, the place bore little resemblance to its former self. Except for one dramatic statement—custom-made wooden shutter doors—the solutions here are well-priced cosmetic “face-lifts” that can be changed to suit your mood or evolving taste. Here are the guidelines we followed:

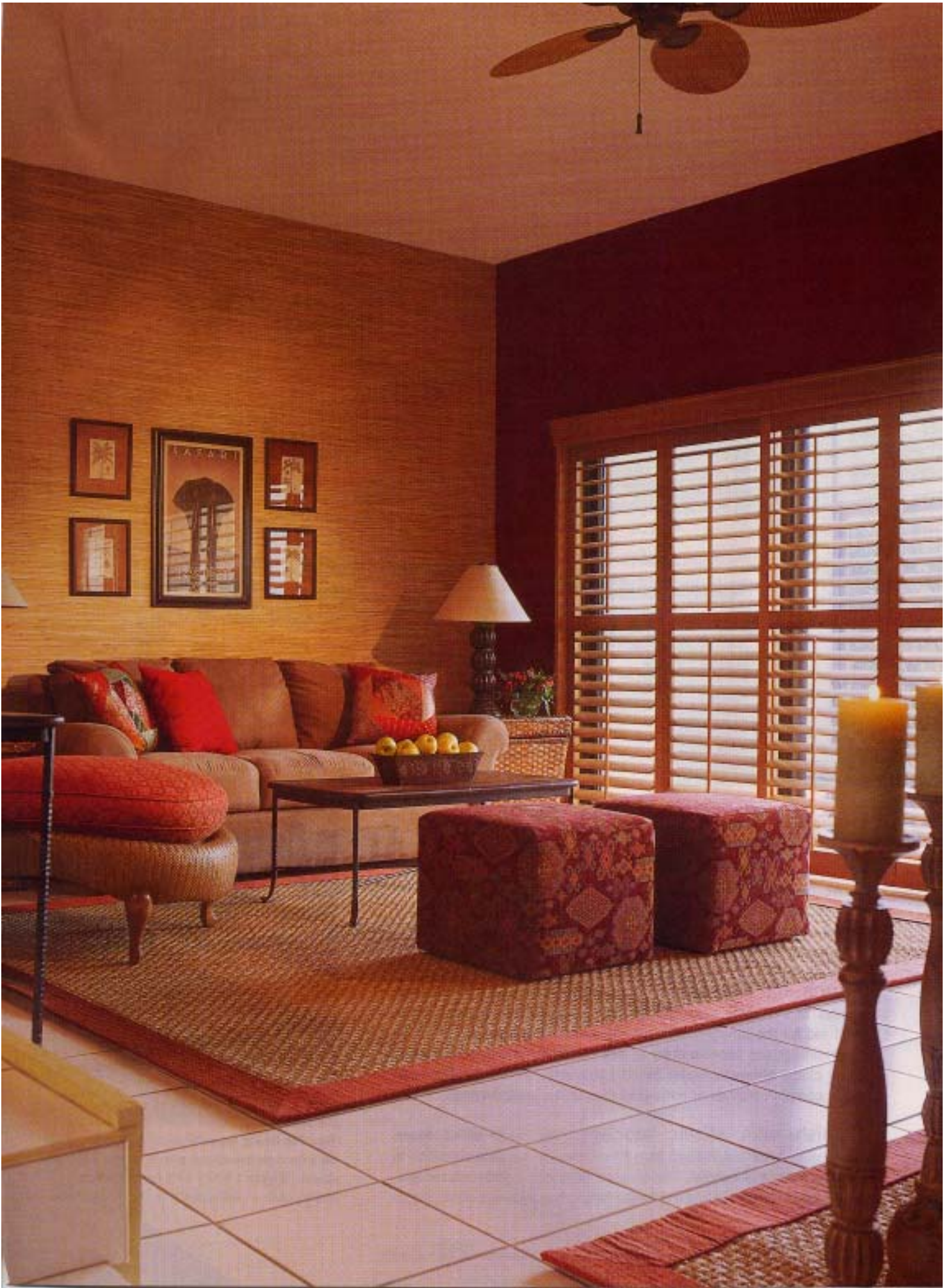
Focus on one dramatic effect. Floor-to-ceiling curtains, a rich wall color and an oversize piece of art are features that can give a room a focal point. We covered standard glass sliding doors, which have a bland, mass-produced character, with Heritage Hardwood Shutters by Hunter Douglas. This new product, here in a golden oak stain, has an “island” feel that transforms the room ([800] 937-7895; hunterdouglas.com).

Add natural textures. Doing this brings the feeling of the outdoors in. We started by papering the walls with Brewster Wallcoverings' Asian Influence grass cloth (#51839). It costs a little more than paint but it takes half the time to install—no waiting for coats to dry and less mess to clean up. And grass cloth doesn't have a repeating pattern to match up, like florals, stripes or other designs ([800] 366-1700; brewsterwallcovering.com). Next we softened the cold white-glazed floor tiles with sea-grass carpets from Smith and Noble. The Raj-patterned border in cayenne adds a little flair ▶

We gave this plain condo a sizzling, exotic feel with wooden shutter doors, a rich red palette, plenty of natural fibers on the walls and floor, and ethnic furnishings from Pier 1 Imports.

PRODUCED AND WRITTEN BY JORGE ARANGO | PHOTOGRAPHY BY COREY WEINER







and also picks up the other reds in the room ([800] 765-7776; smithandnoble.com).

We created a Zenlike atmosphere in the atrium by filling it with river rocks and bringing in a Granite Falls fountain from the Krupps garden-supply catalog ([888] KRUPPS1; krupps.com) and plants from Home Depot (homedepot.com).

Punch up the color. Pick textiles and paints in different shades of the same color family. We selected Glidden's rich Drum Beat red for the dining-room wall and soffits, and a yellow-green for the moldings and doors in order to pick up the underlying colors of the grass cloth. Minwax's water-based Latte stain on the banister and stairs complements other natural shades in the wallcoverings.

Furnish with ethnic touches. We mixed ethnic flavors (Caribbean, Asian and African) from Pier 1 Imports' furniture collection to give the room a global feel. The owner already had a putty-colored sofa; we added Domingo console and coffee tables, two Papanga rattan trunks



Top: The dining room–living room area looks out on a rock-garden atrium with a serene waterfall. Above: Glidden's Drum Beat red, from Home Depot, adds an Asian touch to the dining room.

two Papanga rattan trunks for side tables, Rotunda lamps and two Izmir ottomans upholstered in a tapestry fabric. The owner decided to splurge on a curvy chaise designed by Raymond Waites for Laneventure, and upholstered it in Regal Diamond fabric ([800] 235-3558; laneventure.com). We created another seating area around the Panama entertainment center using two Izmir chairs, a smaller Papanga trunk and a floor lamp. In the dining room a Calaman table and chairs bring in still more wood and natural fiber ([800] 245-4595; pier1.com).

Accessorize to harmonize. The finishing touches should complement the colors and textures of the room but shouldn't be so similar that they fade into the background. For example, instead of a natural wood color like that on the shutter doors, we chose wooden Pier 1 candlesticks with an antique ivory finish. The pillows on the sofa introduce a different pattern (a shimmering sari fabric patchwork), a different shade of red (bright scarlet) and another texture (suede). On the Pyramid chest that sits under the stairway, we placed a green crackle-glazed vase that echoes the green of the moldings and doors. Clear-glass candleholders, vases and potpourri bowls scattered throughout add a reflective sparkle to the room. □



“Except for one dramatic statement—wooden shutter doors—the solutions are well-priced cosmetic ‘face-lifts,’ easily changed to suit your evolving taste.”

Top: After its face-lift, the entryway invites you in. Above and right: Removing the railing that separated the living and dining rooms gives the place a more airy feel.